

Original Research Article

Changes in Phospholipid Composition of Erythrocyte Membrane in Alzheimer's Disease

Shinji Oma^a Shiro Mawatari^b Kazuyuki Saito^c Chikako Wakana^c
Yoshio Tsuboi^a Tatsuo Yamada^a Takehiko Fujino^{b, c}

^aDepartment of Neurology, Fukuoka University School of Medicine, ^bInstitute of Rheological Function of Food, and ^cBoocs Clinic Fukuoka, Fukuoka, Japan

Key Words

Alzheimer's disease · Erythrocyte phospholipids · Ethanolamine plasmalogen · Sphingomyelin · Oxidative stress

Abstract

Background: There are several reports indicating a decrease of ethanolamine plasmalogen (pl-PE) in brain tissues and in serum of patients with Alzheimer's disease (AD). The present study aimed to examine the composition of erythrocyte phospholipids including pl-PE in patients with AD. **Method:** A high-performance liquid chromatography (HPLC) method that can separate intact plasmalogens and all other phospholipid classes by a single chromatographic run was used. **Results:** The ratios of pl-PE, phosphatidylethanolamine (PE) and phosphatidylserine (PS) to sphingomyelin were low as compared to those of the age-matched controls. **Conclusion:** These changes in erythrocyte phospholipids may reflect changes induced by oxidative stress, indicating the presence of high oxidative stress in the peripheral blood of AD patients.

Copyright © 2012 S. Karger AG, Basel

Introduction

Alzheimer's disease (AD) is the most common cause of dementia in the elderly. As life expectancy increases, AD is becoming a major health problem worldwide. Several reports indicate the decrease of ethanolamine plasmalogen (pl-PE) in the brain tissues of AD patients [1–3]. It was also reported that pl-PE decreased in the serum of AD patients and that

Table 1. Age, gender, and MMSE score of subjects

	Control (n = 15)	AD (n = 16)
Age, years	73.1 ± 4.6	76.5 ± 8.1
Sex, m/f	5/10	7/9
MMSE score	30.0 ± 0	4.1 ± 3.4

the decrease of pl-PE in the serum correlated with severity of dementia [4, 5]. Plasmalogens in animals are primarily present in the cell membrane of tissues, hence, blood cells in the peripheral blood contain a much higher amount of pl-PE than serum. We previously reported on high-performance liquid chromatography (HPLC) which can separate intact plasmalogens and all other phospholipids by a single run [6]. The HPLC method detects only traces of pl-PE of human serum, but the method clearly detects pl-PE of the human erythrocyte [6]. Several abnormalities in the erythrocytes from patients with AD have been reported [7–11], but a possible abnormality of erythrocyte pl-PE has not been tested hitherto. In the present study, we measured phospholipid composition including pl-PE of erythrocytes from patients with AD compared to age-matched control subjects.

Subjects and Methods

Subjects

Sixteen subjects with AD and 15 age-matched normal control subjects were enrolled at the Department of Neurology, Fukuoka University Hospital, Fukuoka, Japan. The study was conducted according to the Declaration of Helsinki and was approved by the Institutional Review Board of Fukuoka University Hospital. AD was diagnosed clinically including Mini-Mental State Examination (MMSE) score. Subjects with a high ratio (>2) of low-density lipoprotein to high-density lipoprotein, obesity, hypertension, and high blood sugar levels were excluded from the control group, and subjects with high C-reactive protein (>1 mg/100 ml) were excluded from either group. Age, gender, and MMSE score are reported in table 1. Serum total cholesterol, low-density lipoprotein, high-density lipoprotein, triglyceride, blood sugar levels, and C-reactive protein in AD patients were statistically not different from the control group.

Preparation of Erythrocytes

Venous blood of the subjects who had fasted overnight was drawn into tubes containing EDTA-2Na. The blood was cooled in an ice bath and was kept in a refrigerator, and it was processed within 48 h. Plasma and buffy coat were removed after centrifugation at 1,000 g for 5 min at 4°C, and the erythrocytes were washed three times in cold isotonic saline at 1,000 g for 5 min at 4°C. A small portion of the top layer was removed at each washing.

Determination of Lipid Composition of Erythrocytes

Extraction of lipids from erythrocytes was essentially performed according to the method reported by Mawatari et al. [6] and Dise et al. [12]. Briefly, 500 µl of the packed erythrocytes was hemolyzed with an equal volume of 10 mM phosphate buffer (pH 7.4). Four milliliter of methanol was added to the lysate followed after 40 min by 4 ml chloroform. After an additional 30 min, the extract was centrifuged and the residue was re-extracted with 4 ml

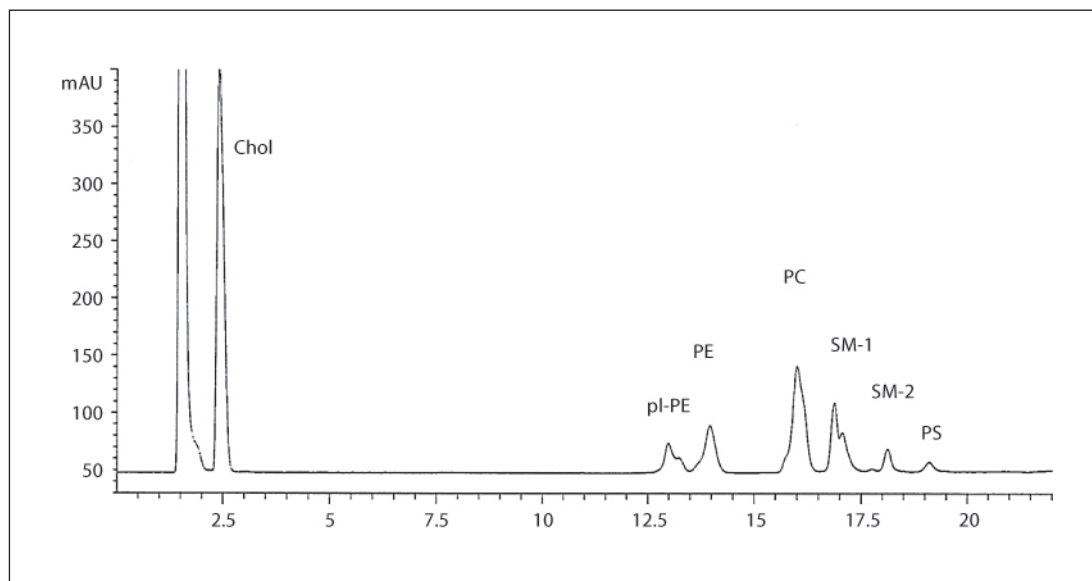


Fig. 1. Representative HPLC chromatogram of human erythrocyte lipids. Lipids were detected with an evaporative light-scattering detector. SM showed several peaks by this HPLC method, and two of the large peaks are tentatively named SM-1 and SM-2. Chol = Cholesterol.

of methanol/chloroform (1:1, v/v). Methanol and chloroform used in the extraction of lipids contained butylhydroxytoluene (50 mg/l). Pooled extracts were washed with 10 ml of 50 mM KCl to make a biphasic mixture. One milliliter of the lower phase of the lipid extract was dried under N₂ gas.

Separation of phospholipid classes including plasmalogens by HPLC was done by our reported method [6, 13]. The HPLC system used was an Agilent HPLC system (Agilent Technologies, Tokyo, Japan) equipped with an evaporative light-scattering detector. The system was connected to a Chem Station (Agilent Technology) for control and analysis of chromatograms. The dried total lipids were dissolved in 200 μ l hexane/2-propanol (1:1, v/v) and, after filtration through a 0.2- μ m filter, 20 μ l was injected into the HPLC system.

Statistical Analysis

We analyzed the data using a paired t test (two-tailed) with $p < 0.05$ used for significance.

Results

Erythrocyte membrane phospholipid classes including pl-PE and cholesterol was simultaneously detected by a single run of the HPLC (fig. 1). Relative composition of phospholipid classes was calculated on the basis of each chromatographic area, and then the ratios of glycerophospholipids to sphingomyelin (SM) were calculated (table 2). The ratio of pl-PE to SM decreased in AD as compared to the control group (table 2). The ratio of phosphatidylethanolamine (PE) and phosphatidylserine (PS) to SM also decreased. The ratio of phosphatidylcholine (PC) to SM was not changed.

Table 2. Ratios of glycerophospholipids to sphingomyelin

	Control (n = 15)	AD (n = 16)
pl-PE/SM (× 100)	40.0 ± 3.6	35.2 ± 3.6***
PE/SM (× 100)	50.4 ± 7.6	45.1 ± 6.5*
PS/SM (× 100)	14.6 ± 6.9	8.5 ± 7.1**
PC/SM (× 100)	110.0 ± 17.6	102.4 ± 10.4

Values are means ± SD. * p < 0.05; ** p < 0.01; *** p < 0.001 vs. control.

Discussion

Circulating human erythrocytes have no intracellular organelle, hence, lipids are present only in the plasma membrane. Therefore, the lipids extracted from the washed erythrocytes indicate the lipids of the erythrocyte membrane. SM in the human erythrocyte membrane contains few polyunsaturated fatty acids (PUFAs); on the other hand, PS contains a high amount of docosahexaenoic and arachidonic acid [13, 14]. In the human erythrocyte membrane, PS contains a higher amount of PUFA than PE, and PC contains a much lower amount of PUFA than PS and PE [13, 14]. It is known that phospholipids containing a high amount of PUFA are prone to oxidative stress [15, 16]. Actually, our previous reports showed that relative composition of SM and PC increased in contrast to PS, PE, and pl-PE, when human erythrocytes were incubated with *tert*-butyl hydroperoxide (tBHP) [6]. Therefore, the ratio of each glycerophospholipid to SM is a good indicator of the degree of peroxidative change of each glycerophospholipid [6, 14].

Human erythrocyte pl-PE was composed of a higher amount of PUFA than PS and PE in our previous study [13], and actually the decrease of pl-PE in human erythrocytes due to oxidation with tBHP was about twice as much as that of PE and PS [6]. In the present study, degree of decrease of pl-PE was the highest among glycerophospholipids and, degree of decrease of PS was higher than that of PE (table 2). PC was not decreased. These results were very similar to the results of oxidation of human erythrocytes with tBHP [6]. Hence, the changes in the erythrocyte phospholipids in AD seem to reflect the changes by oxidative stress.

Many of the reports on possible peripheral biomarkers for AD indicated the presence of high oxidative stress in serum and erythrocytes of AD patients [10, 17–21]; however, the source of oxidative stress in serum and erythrocytes is not necessarily clear. The presence of abnormal amyloid β -peptide in the blood of AD patients has been reported [22–24], and the interactions of amyloid β -peptide with erythrocytes have been indicated in AD [25–28]. Jayakumar et al. [25] reported that incubation of amyloid β -peptide with human erythrocytes resulted in binding of amyloid β -peptide to erythrocytes and that the process oxidized the erythrocytes. Nakagawa et al. [28] recently reported that both the incubation of human erythrocytes with amyloid β -peptide and the injection of amyloid β -peptide in mice resulted in binding of amyloid β -peptide to the erythrocytes and that both experiments induced peroxidation of erythrocyte phospholipids. Hence, amyloid β -peptide may be a source of oxidative stress in the blood of AD patients.

The present results showed an abnormal phospholipid composition of erythrocyte membranes in the AD group, indicating the presence of high oxidative stress in the circulating blood as compared to the age-matched non-demented group.

Acknowledgement

We would like to thank Seibin Chen and Yuko Terasaki for their technical assistance.

References

- Ginsberg L, Rafique S, Xuereb JH, Rapoport SI, Gershfeld NL: Disease and anatomic specificity of ethanolamine plasmalogen deficiency in Alzheimer's disease brain. *Brain Res* 1995;698:223–226.
- Guan Z, Wang Y, Cairns NJ, Lantos PL, Dallner G, Sindelar PJ: Decrease and structural modifications of phosphatidylethanolamine plasmalogen in the brain with Alzheimer disease. *J Neuropathol Exp Neurol* 1999;58:740–747.
- Han X, Holtzman DM, Mckeel DW Jr: Plasmalogen deficiency in early Alzheimer's disease subjects and in animal models; molecular characterization using electrospray ionization mass spectrometry. *J Neurochem* 2001;77:1168–1180.
- Goodenowe DB, Cook LL, Liu J, Lu Y, Jayasinghe DA, Ahiahonu PW, Heath D, Yamazaki Y, Flax J, Krenitsky KF, Sparks DL, Lerner A, Friedland RP, Kudo T, Kamino K, Morihara T, Takeda M, Wood PL: Peripheral ethanolamine plasmalogen deficiency: a logical causative factor in Alzheimer's disease and dementia. *J Lipid Res* 2007;48:2485–2498.
- Wood PL, Mankidy R, Ritchie S, Heath D, Wood JA, Flax J, Goodenowe DB: Circulating plasmalogen levels and Alzheimer disease assessment scale-cognitive scores in Alzheimer patients. *J Psychiatry Neurosci* 2010;35:59–62.
- Mawatari S, Okuma Y, Fujino T: Separation of intact plasmalogens and all other phospholipids by a single run of high-performance liquid chromatography. *Anal Biochem* 2007;370:54–59.
- Bosman GJ, Bartholomeus IG, De Man AJ, Van Karmthout PJ, De Grip WJ: Erythrocyte membrane characteristics indicate abnormal cellular aging in patients with Alzheimer's disease. *Neurobiol Aging* 1991;12:13–18.
- Janoshazi A, Sellal F, Marescaux C, Danion JM, Warter JM, Bary JD: Alteration of protein kinase C conformation: a potential marker for Alzheimer's disease but not for Parkinson's disease. *Neurobiol Aging* 2006;27:245–251.
- Kay MM, Goodman J: Brain and erythrocyte anion transporter protein, band 3, as a marker for Alzheimer's disease: structural changes detected by electron microscopy, phosphorylation, and antibodies. *Gerontology* 1997;43:44–66.
- Skoumalova A, Ivica J, Santrova P, Topinkova E, Wilhelm J: The lipid peroxidation products as possible markers of Alzheimer's disease in blood. *Exp Gerontol* 2011;46:38–42.
- Walter H, Widen KE, Read SL: Red blood cells from Alzheimer patients and from normal subjects discerned by cell electrophoresis in an aqueous polymer solution. *Biochem Biophys Res Comm* 1993;194:23–28.
- Dise CA, Goodman DB, Rasmussen H: Definition of the pathway for membrane phospholipid fatty acid turnover in human erythrocytes. *J Lipid Res* 1980;21:292–300.
- Mawatari S, Yunoki K, Sugiyama M, Fujino T: Simultaneous preparation of purified plasmalogens and sphingomyelin in human erythrocytes with phospholipase A1 from *Aspergillus oryzae*. *Biosci Biotechnol Biochem* 2009;73:2621–2625.
- Mawatari S, Murakami K: Analysis of membrane phospholipid peroxidation by isocratic high-performance liquid chromatography with ultraviolet detection. *Anal Biochem* 1998;264:118–123.
- Clemens MR, Waller HD: Lipid peroxidation in erythrocytes. *Chem Phys Lipids* 1987;45:251–268.
- Wagner BA, Buetiner GR, Burns CP: Free radical-mediated lipid peroxidation in cells: oxidizability is a function of cell lipid bis-allylic hydrogen content. *Biochemistry* 1994;33:4449–4453.
- Baldeiras I, Santana I, Proenca MT, Garrucho MH, Pascoal R, Rodrigues A, Duro D, Oliveira CR: Peripheral oxidative damage in mild cognitive impairment and mild Alzheimer's disease. *J Alzheimers Dis* 2008;15:117–128.
- Guidi I, Galimberti D, Lonali S, Novembrino C, Bamonti F, Tiriticco M, Fenoglio C, Venturelli E, Baron P, Bresolin N, Scarpini E: Oxidative imbalance in patients with mild cognitive impairment and Alzheimer's disease. *Neurobiol Aging* 2006;27:262–269.

- 19 Gustaw-Rothenberg K, Kowalczyk K, Stryiecka-Zimmer M: Lipids' peroxidation markers in Alzheimer's disease and vascular dementia. *Geriatr Gerontol Int* 2010;10:161–166.
- 20 Padurariu M, Ciobica A, Hritcu L, Stoica B, Bild W, Stefanescu C: Changes of some oxidative stress markers in the serum of patients with mild cognitive impairment and Alzheimer's disease. *Neurosci Lett* 2010;469:6–10.
- 21 Torres LL, Quaglio NB, De Souza GT, Garcia RT, Dati LM, Moreira WL, Loureiro AP, De Souza-Tararico JN, Smid J, Porto CS, Bottino CM, Nitrini R, Barros SB, Camarini R, Marcourakis T: Peripheral oxidative stress biomarkers in mild cognitive impairment and Alzheimer's disease. *J Alzheimers Dis* 2011;26:59–68.
- 22 Blasko I, Jellinger K, Kemmler G, Krampla W, Jungwirth S, Wichart I, Tragl KH, Fischer P: Conversion from cognitive health to mild cognitive impairment and Alzheimer's disease: prediction by plasma amyloid beta 42, medial temporal lobe atrophy and homocysteine. *Neurobiol Aging* 2008;29:1–11.
- 23 Cammarata S, Borghi R, Giliberto L, Pardini M, Pollero V, Novello C, Fornaro M, Vitali A, Bracco L, Caltagirone C, Bossu P, Odetti P, Tabaton M: Amyloid-beta42 plasma levels are elevated in amnesic mild cognitive impairment. *J Alzheimers Dis* 2009;18:267–271.
- 24 Schupf N, Tang MX, Fukuyama H, Manly J, Andrews H, Mehta P, Ravetch J, Mayeux R: Peripheral Abeta subspecies as risk biomarkers of Alzheimer's disease. *Proc Natl Acad Sci USA* 2008;105:14052–14057.
- 25 Jayakumar R, Kusiak JW, Chrest FJ, Demehin AA, Murali J, Wersto RP, Nagababu E, Ravi L, Rifkind JM: Red cell perturbations by amyloid beta-protein. *Biochim Biophys Acta* 2003;1622:20–28.
- 26 Kuo YM, Kokjohn TA, Kalback W, Luehrs D, Galasko DR, Chevallier N, Koo EH, Emmerling MR, Roher AE: Amyloid-beta peptides interact with plasma proteins and erythrocytes: implications for their quantification in plasma. *Biochem Biophys Res Comm* 2000;268:750–756.
- 27 Mattson MP, Begley JG, Mark RJ, Furukawa K: Aβ_{25–35} induces rapid lysis of red blood cells: contrast with Aβ_{1–42} and examination of underlying mechanisms. *Brain Res* 1997;771:147–153.
- 28 Nakagawa K, Kiko T, Miyazawa T, Sookwong P, Tsuduki T, Satoh A, Miyazawa T: Amyloid β-induced erythrocytic damage and its attenuation by carotenoids. *FEBS Lett* 2011;585:1249–1254.